

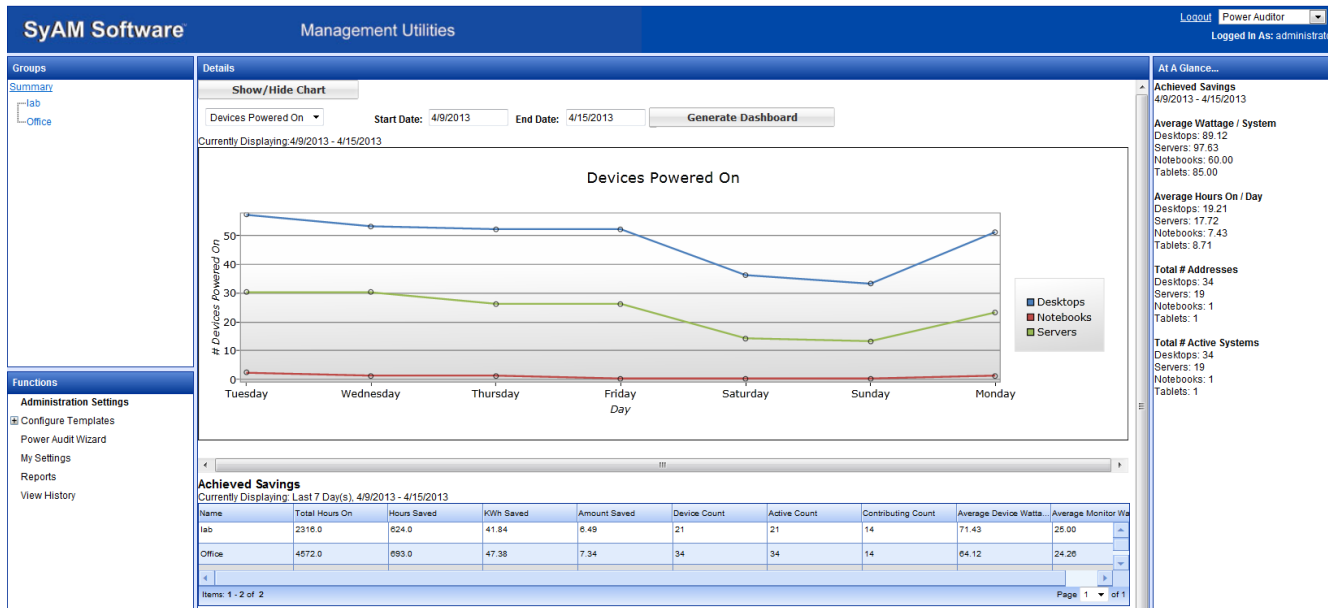
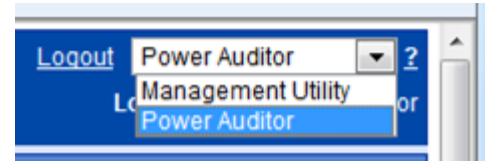


Power Auditor - Reporting

Product Training 2018

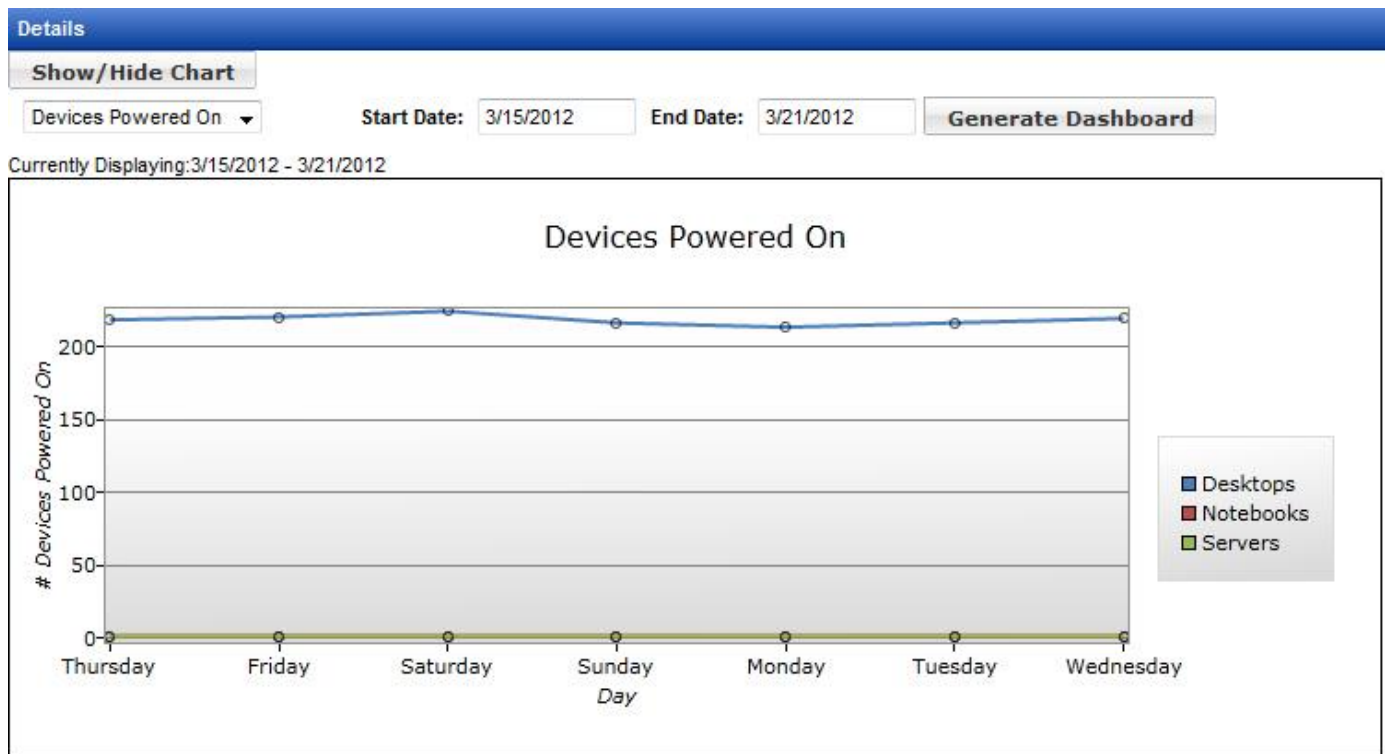
Power Audit Dashboard

- Navigate to the Power Auditor feature to access Power Charts/Reports.



Power Charts

Select the chart type, start date and end date, then click the Generate Dashboard button. You can choose whether to display charts by clicking the Show/Hide Chart button. There is a default setting for displaying charts on the My Settings page.

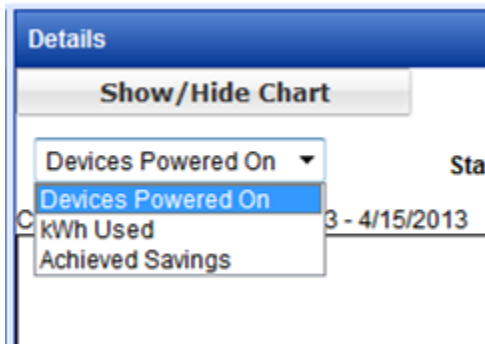




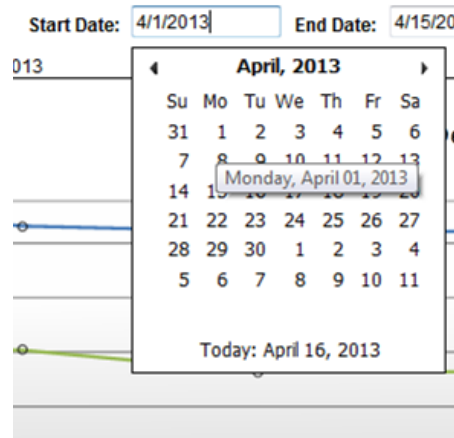
Devices Powered On Chart

In this example we walk you through how to generate a Devices Powered On Report from April 1 – April 5.

1. Choose the Report You Want



2. Choose a Start Date

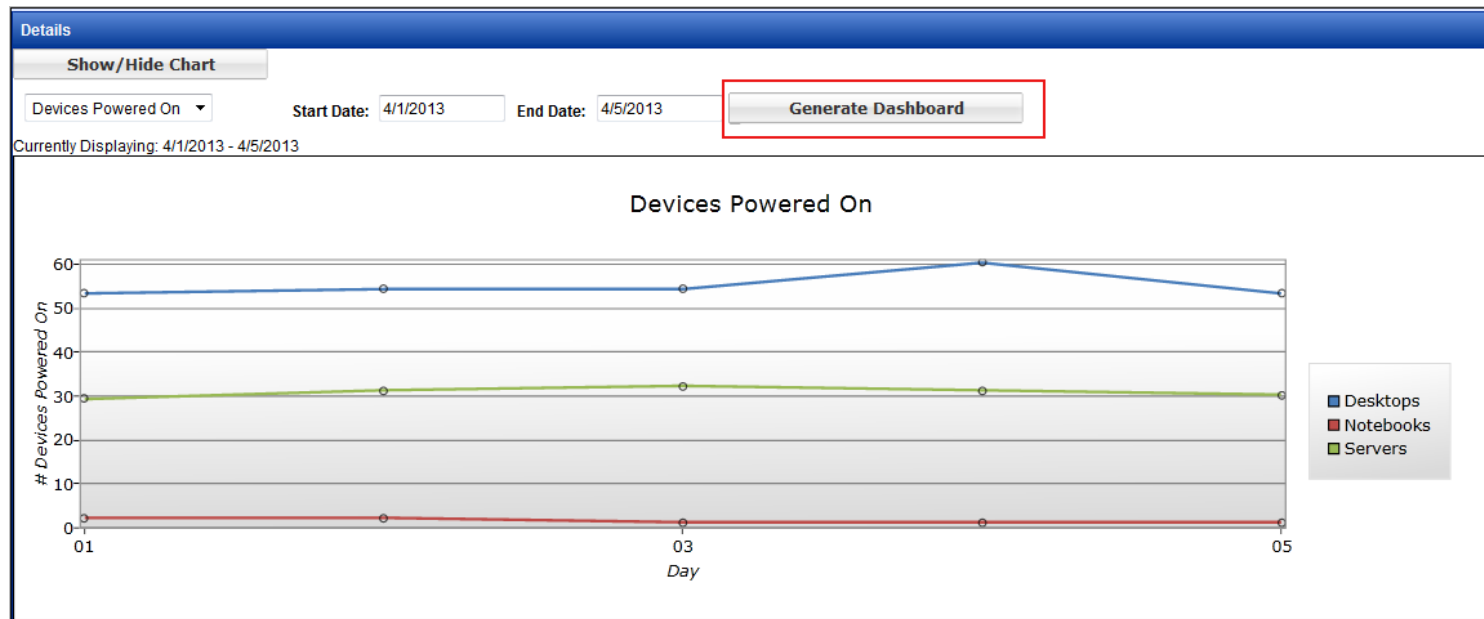


3. Choose an End Date



Generating the Report

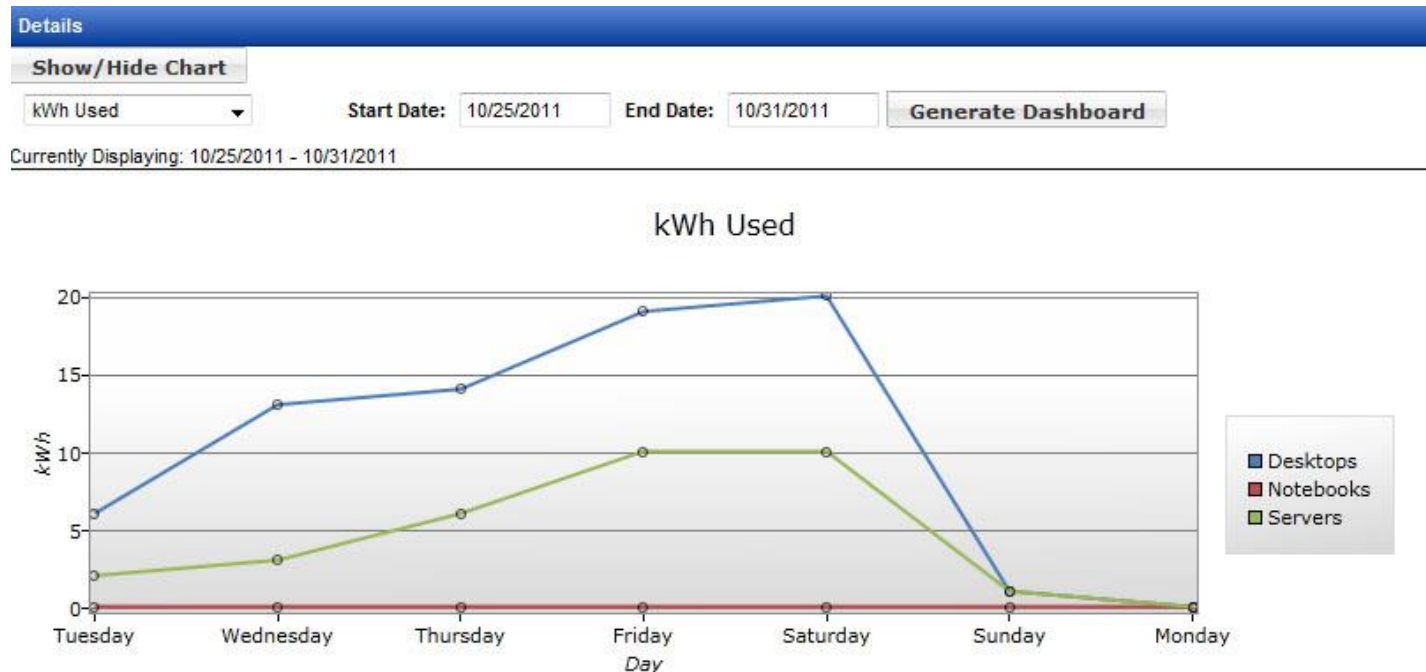
- After selecting the type of report and dates you wish to collect information on, click Generate Dashboard to update the dashboard.
- You will now see the chart displaying the number of Desktops, Notebooks and Servers powered on from 4/1/2013 – 4/5/2013





kWh Used Chart

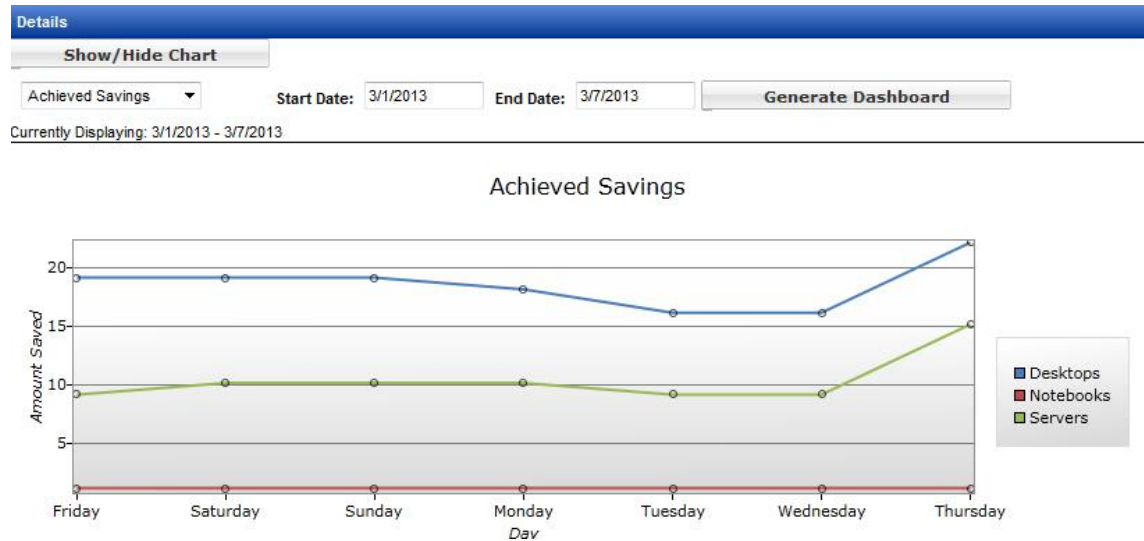
The kWh Used chart shows the number of kilowatt-hours used per day (for a range of days) or per hour (for a 1-day chart).





Achieved Savings Chart

- The Achieved Savings chart appears in the menu when Power Auditor is in Achieved Savings mode. This chart shows the amount saved, by system type, for the specified range of days.





Power Audit Reports

Power Auditor can produce HTML or PDF reports on demand. PDF reports are stored in an archive, named either by Report Type or by the text entered in the Save Report As field. Available report types include Identified Savings (potential cost savings based on audit data) and Achieved Savings (actual savings from enforcing power settings with Management Utility power templates). Both summary and detail reports can be generated for these report types.

The screenshot shows the 'Details' window of the Power Auditor software. It is divided into two main sections: 'OnDemand Reports' and 'Archive'.

OnDemand Reports

- Start Date:** 15 Mar 2012
- End Date:** 21 Mar 2012
- Report Type:** Identified Savings Summary Report (selected)
- Report Format:** Identified Savings Summary Report (selected)
- Save Report As:** (empty text field)
- Buttons:** A 'Generate' button is visible.

Archive

No records found.



Identified Savings Summary

Identified savings reports, both on-demand and email, contain the following information (per group and totals):

- Name: The name of the Power Audit group
- Device Count: Total number of systems in the group
- Active Count: The number of systems that reported powered on status at any time during the reporting period
- Contributing Count: The number of systems that contributed to identified savings, that is, they were powered on for more hours than specified by the Power On Hours template
- Average Device Wattage: System power consumption as specified in the Power On Hours template
- Average Monitor Wattage: Display power consumption as specified in the Power On Hours template
- Total Hours On: Number of powered on hours for the entire group during the reporting period
- Hours To Be Saved: Number of powered on hours outside those specified by the Power On Hours template
- kWh To Be Saved: Total potential power saving for the group, based on wattages and hours calculated
- Amount To Be Saved: Total potential dollars saved for the group, based on kWh savings calculated and cost per kWh specified in Administration Settings

[Print](#) [Close](#)

Identified Savings Summary Report
2/22/2011 - 2/28/2011

Name	Device Count	Active Count	Contributing Count	Average Device Wattage	Average Monitor Wattage	Total Hours On	Hours To Be Saved	kWh To Be Saved	Amount To Be Saved
Factory	33	24	22	89.00	25.00	3091.5	1879.5	214.26	40.71
Main Office	16	9	7	85.00	25.00	1163.0	832.0	91.52	17.39
Main Office - Servers	3	3	0	120.00	25.00	501.0	0.0	0.00	0.00
Northwest Branch	5	3	3	88.00	25.00	501.0	270.0	30.51	5.80
Warehouse	21	17	17	85.00	25.00	2461.0	1298.0	142.56	27.09
Totals:	78	56	49	93.40	25.00	7717.5	4277.5	478.85	90.99



Achieved Savings Summary

In Identified Savings mode, actual powered on hours are compared to the desired hours as defined in the Power On Hours Template. When we move into Achieved Savings mode, we are comparing the actual powered on hours with the baseline of data that was collected during the Identified Savings period. So there are some differences in achieved savings reports:

- Contributing Count: The number of systems that contributed to achieved savings, that is, they were powered on fewer hours than the baseline average
- Hours Saved: Number of powered on hours saved through power management, compared with the baseline data
- kWh Saved: Actual power saving for the group, based on wattages and hours calculated
- Amount Saved: Actual dollars saved for the group, based on kWh savings calculated and cost per kWh specified in Administration Settings

Achieved Savings Summary Report

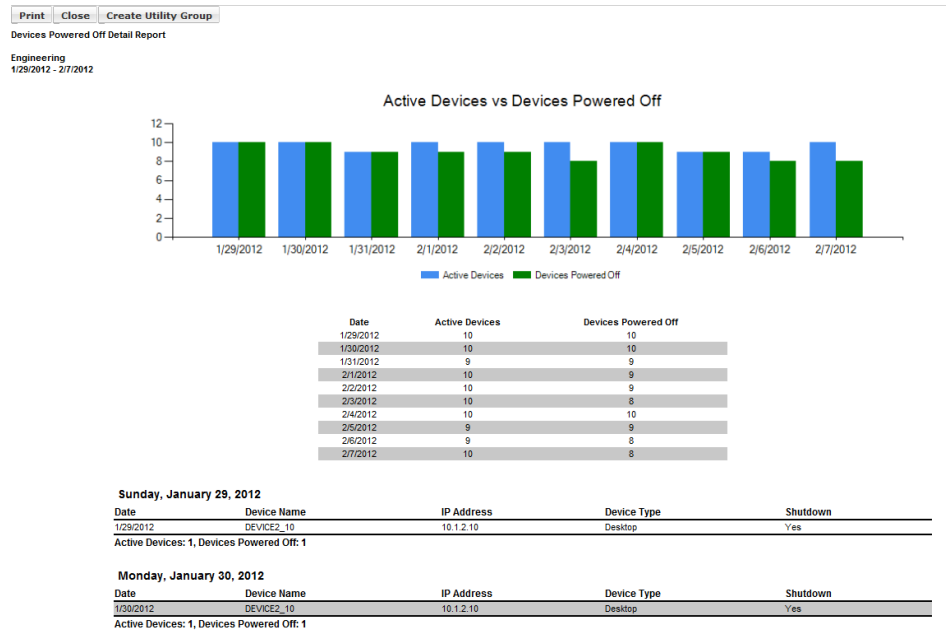
3/15/2012 - 3/21/2012

Name	Device Count	Active Count	Contributing Count	Average Device Wattage	Average Monitor Wattage	Total Hours On	Hours Saved	KWh Saved	Amount Sa
100-194	1	0	0	120.00	25.00	0.0			
Administration	15	15	0	80.00	25.00	714.0			
Development - East	15	15	0	80.00	25.00	761.0			
Development - Springfield	15	15	0	80.00	25.00	854.0			
Factory - Central	15	15	0	80.00	25.00	738.0			
Factory - East	15	15	0	80.00	25.00	683.0			
Finance	15	15	0	80.00	25.00	798.0			
IT Testing	15	15	0	80.00	25.00	730.0			
Lab - Franklin	15	15	0	80.00	25.00	760.0			
Lab - Springfield	15	15	0	80.00	25.00	788.0			
Operations	15	15	0	80.00	25.00	804.0			
Public	15	15	0	80.00	25.00	674.0			
QA	15	15	0	80.00	25.00	767.0			
Shipping/Receiving	15	15	0	80.00	25.00	633.0			
Training	15	15	0	80.00	25.00	707.0			
Warehouse	15	15	0	80.00	25.00	740.0			
Totals:	226	225	0	80.18	25.00	11127.0	0.0	0.00	0.00



Devices Powered Off Report

The Devices Powered Off Detail Report summarizes by group the number of active devices (devices that have been powered on) and the number of devices powered off for each day in the date range. A detailed breakout of each day follows the summary, listing the active devices and whether or not they were shut down before midnight.





Other Reports

- **Devices Not Power On**
 - The Devices Not Powered On report lists all devices, by group, that have not been powered on between the start date and the end date. If a device is powered on at any time during this period, it will not be listed on the report.
- **List Machines with Agent but no Power Template**
 - The List Machines with Agent but no Power Template report lists all devices that have a SyAM System Client but currently do not have a Power Schedule template applied to them. Systems that have Power on Hours Templates for 168 hours a week will not be presented in this report.
- **List Machines without Agent**
 - The List Machines without Agent report lists all devices that are being audited that currently do not have a SyAM System Client installed on them.
- **Achieved Savings Detail**
 - This report shows achieved savings for individual machines.
- **Identified Savings Detail**
 - This report shows identified savings for individual machines.



Executive Report

- The executive report is available when in Achieved Savings Mode. The report summarized achieved savings results for the selected month and year, displaying savings by group, the trend in amount of money saved, how achieved savings compares with projected savings, and a summary of carbon savings for the month.

South Central School District

Executive Report

Achieved Savings
December 2012

This executive report visualizes the results of the energy efficiency measures implemented on your computer network using SYAM Software. The Achieved Savings of the computer network, is calculated by using the difference between actual energy usage and the estimated energy consumption that would have occurred during the same period had the efficiency measures not been implemented (the baseline).

Achieved Savings Summary

The following information summarizes the achieved savings data for December 2012 in both kilowatt hours and amount saved. It also provides a breakdown of the types and quantities of systems being audited.

KWh Saved:	39169.33	Total # of managed devices:	1007
Cost Per KW/h:	\$0.17	Notebooks:	67
December 2012 Savings:	\$6,658.79	Desktops:	927
		Servers:	0
		Unknown:	13

Achieved Savings by Group

The following chart shows the percentage of each group's contribution to total savings for December 2012.



Middle School	28.35%
High School	23.76%
Elementary School	22.89%
Library	19.26%
Central Office	5.75%

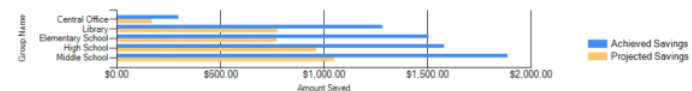
Achieved Savings Trend

The following chart shows the amount of money saved by month over the last year or the start of achieved savings mode.



Achieved Savings vs Projected Savings Goal

The following chart shows each group's projected savings vs actual savings.



Carbon Savings

From 1/1/2012 to 12/31/2012, you have saved 376115.83 kilowatt hours which is equivalent to 259.5 metric tons of CO2 emissions. This is the equivalent of removing 50.9 car(s) from the road.

An average passenger vehicle travels 11,720 miles per year with a fuel economy of 20.4 miles per gallon. Source: <http://www.epa.gov/cleanenergy/>